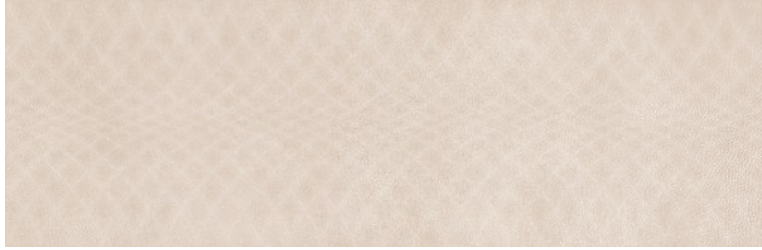


## AREGO TOUCH IVORY STRUCTURE SATIN



DIMENSION:	29 X 89
THE NAME OF THE COLLECTION:	AREGO TOUCH
TYPE OF TILE:	WALL TILES
PRODUCT CODE:	OP1018-008-1
EAN:	5902115771354
INDEX:	TWZR1022257854

### FEATURES OF TILES

COLOUR:	BEIGE
TYPE OF SURFACE:	STRUCTURE
TILE'S SURFACE FINISH:	SATIN
TILE'S SIZE:	VERY BIG (FROM 80X80)
STAIN RESISTANCE CLASS:	5
INSPIRATION:	CONCRETE
APPLICATION:	INSIDE

### TECHNICAL DATA

PACKAGING WEIGHT:	23,865 KG
NUMBER OF PIECES IN ONE PACKAGE:	5
NUMBER OF M2 IN ONE PACKAGE:	1,29
WEIGHT OF 1M2 TILES:	18,5 KG
WARRANTY:	6 YEARS
USAGE:	WALL
TONALITY:	V1
RECTIFIED TILE:	YES